



/ ( )  
 ( / )  
 ( / )  
 ( )

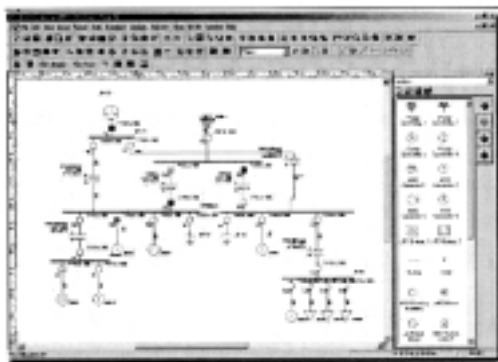
3.2

. EDSA Technical 2000  
 ANSI, IEEE141, 242, 399 IEC 909,  
 363 가



[ 17 : DATA ]

500 BUS 300 BUS 300 ,  
 450



[ 16 : DC Fault Calculation ]

가  
가

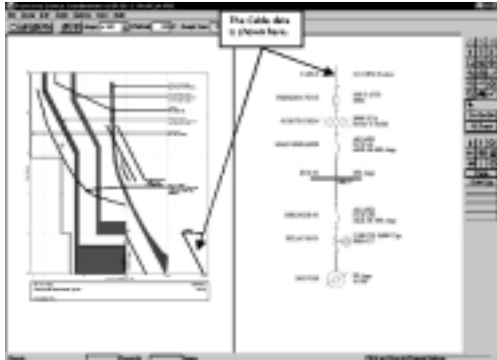


[ 17 : DATA ]

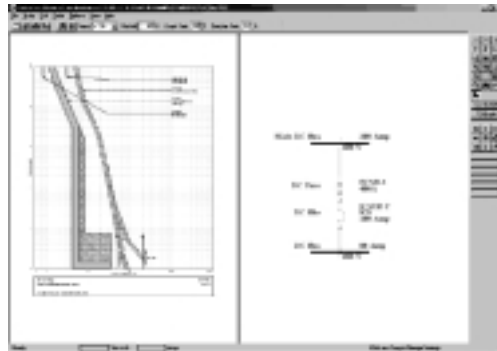




EDSA  
Curve(40,000+)



[ 23 : AC ]



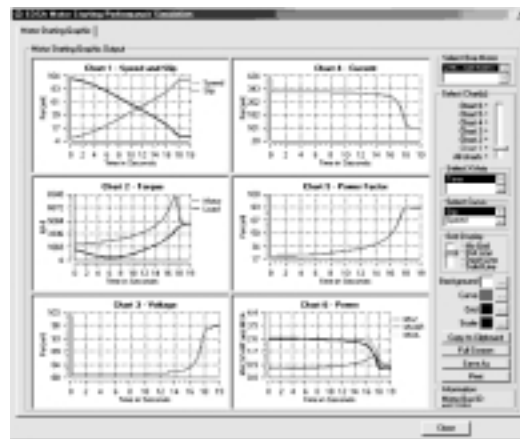
[ 24 : DC ]

3.5

가 EDSA Technical  
2000



[ 25 : Motor Library ]



[ 26 : Motor Torque ]

3.6

EDSA Harmonics Analysis program  
Electrical Engineer

(Load Flow

)

Frequency

Scan Total Harmonics Distortion(THD)

Telephone Interference 가

EDSA resonance situations positive,  
zero, negative sequence

(Bus)

bus

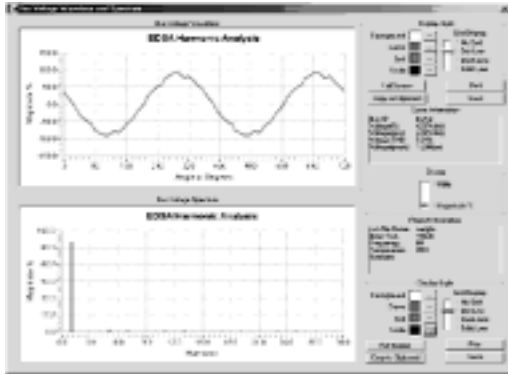
Fscan(Frequency Scan) Ohms

PU

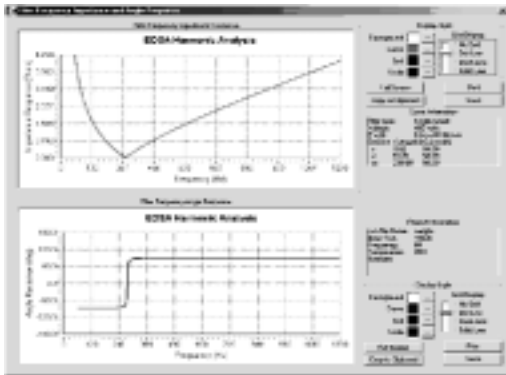
EDSA

Branch

branch current THD



[ 27 : ]



[ 28: ]

Bus bus voltage THD  
 branch current RMS  
 values transformer K-factor  
 time-domain waveform  
 frequency-domain spectrum  
 Text graphic format  
 display  
 EDSA Technical 2000

가

Flow , Harmonic Load

Auto Filter Sizing

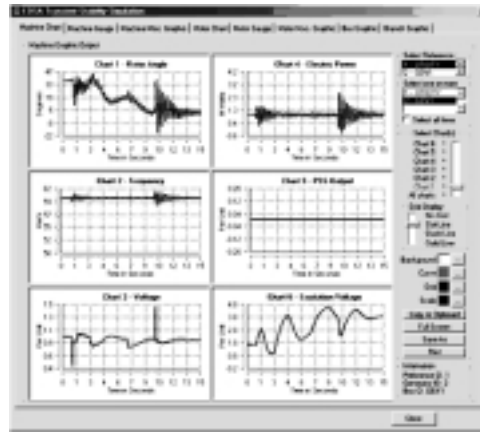
harmonic source  
 source 가

3.7

Transient Stability power  
 system design process

. EDSA Transient Stability  
 generator

, faults dynamic events  
 design

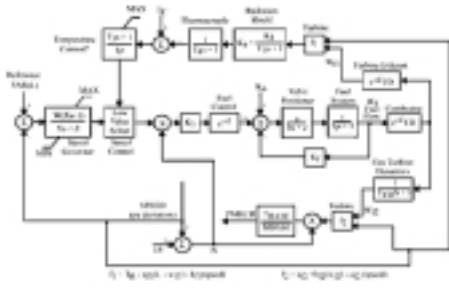


[ 29: ]



[ 30 : ]

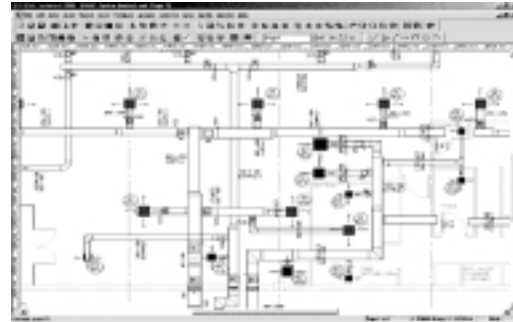
가



[ 31 : ]



[ 33 : Facility Management ]



[ 34 : HVAC ]

EDSA Transient Stability fault( fault )

EDSA 가 , , 가

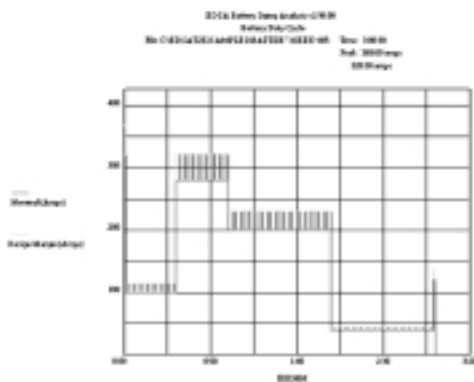
4.

3.8

EDSA Technical 2000 가 Modules

가 , , 가

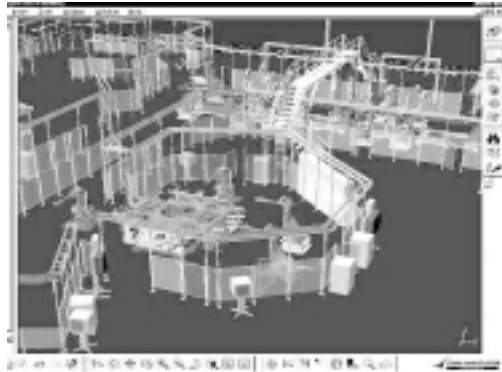
Package



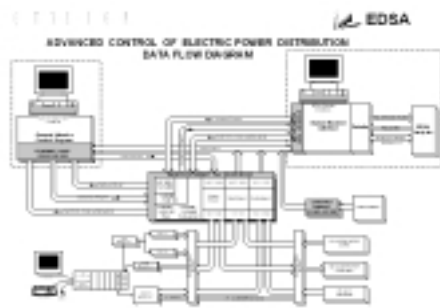
[ 32 : ]

가 Electrical Network

Option



[ 35: 3D ]



[ 36: ]

Network Electrical

EDSA가

3-phase, 1-phase, AC, DC, AC/DC, Loop, Radial Network

Short Circuit, Load Flow, Motor Starting, Device Coordination & Wire Sizing, Harmonics & Transient Stability

(Eurostag, PSAPAC, RTDS, PECO, IECS )

[ 7: ]

EDSA	<a href="http://www.edsa.com">http://www.edsa.com</a>
EMTP	<a href="http://www.keri.re.kr/~keug/index_k.html">http://www.keri.re.kr/~keug/index_k.html</a>
PSS/E	<a href="http://www.pti-us.com">http://www.pti-us.com</a>
SIMULINK	<a href="http://www.mathworks.com">http://www.mathworks.com</a>
CYME	<a href="http://www.cyme.com">http://www.cyme.com</a>
ETAP	<a href="http://www.etap.com">http://www.etap.com</a>
SKM	<a href="http://www.skm.com">http://www.skm.com</a>
PSCAD/EMTDC	<a href="http://www.hvdc.ca">http://www.hvdc.ca</a>
PCLOW	<a href="http://www.ece.utexas.edu/~grady">http://www.ece.utexas.edu/~grady</a>
PFLOW	<a href="http://www.power.uwaterloo.ca">http://www.power.uwaterloo.ca</a>
Power World Simulator	<a href="http://www.powerworld.com">http://www.powerworld.com</a>

Office XP(Office 2002) Password MS Password

가 , , , ,

- < >
- (1) , “ , 48 , 4 , PP70~72, 1999.4
- (2) , “ , 49 , 3 , PP35~38, 2000.3
- (3) , “ , 50 , 7 , PP11~16, 2001.7
- (4) EDSA Technical 2000 User's Guide, 2001.8